

551360 SBC POWER STEERING WITH ELECTRIC WATER PUMP



656729843604

ICT BILLET LLC



Made in the USA
with USA made materials,
spacers, pulleys, & tensioners

Scan to visit our web site



www.ictbillet.com

Technical
Support

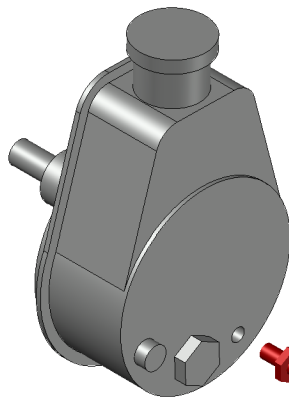
www.ictbillet.com

email: sales@ictbillet.com

Phone: 316-800-695

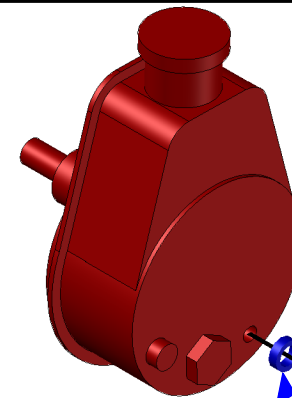
WARNING: Cancer and Reproductive Harm - www.P65Warnings.ca.gov

1



REMOVE EXISTING
STUD FROM BACK OF
POWER STEERING
PUMP

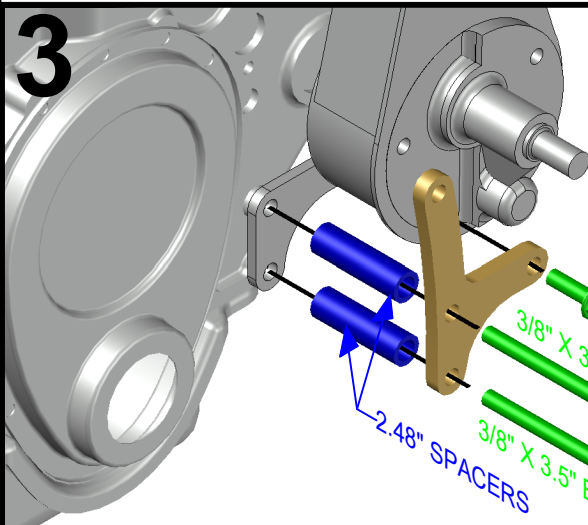
2



REAR BRACKET

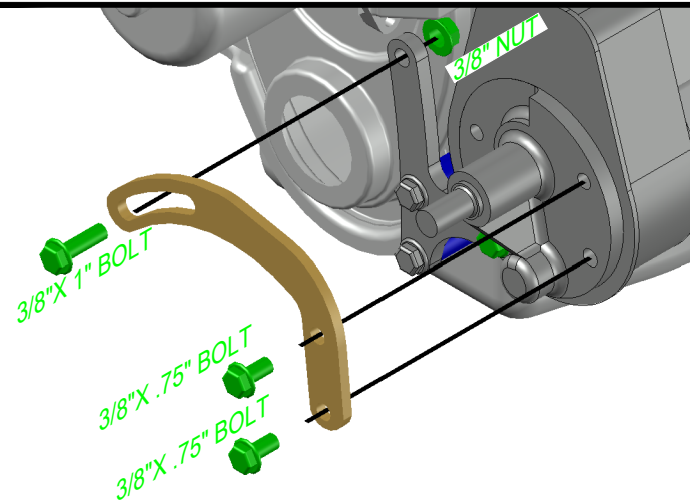
3/8" X 1" BOLT
22" SPACER

3



2.48" SPACERS
3/8" X 3.5" BOLT
3/8" X 1" BOLT

4



3/8" X 1" BOLT

3/8" X .75" BOLT
3/8" X .75" BOLT

3/8" NUT

WARNING: Proposition 65 - This product can expose you to chemicals including lead, which is known to the State of California to cause cancer, birth defects, or other reproductive harm. For more information go to www.P65Warnings.ca.gov **ALUMINUM** - Most of the aluminum alloys used today contain some level of lead, usually less than .1%. Lead is known to the state of California to cause cancer and reproductive harm. Most aluminum alloys are physiologically inert in their solid form, and the lead is contained within, however user-generated dust and/or fumes may pose a hazard if inhaled or ingested. Heating beyond a certain temperature may also provide avenues for exposure. **STEEL BOLTS** - Steel is an iron alloy with several metals including Nickel and Chromium. Both Nickel and Chromium are known to the State of California to cause cancer and reproductive harm respectively. This warning applies to stainless steels as well.